

MERCE CUNNINGHAM STUDIO

55 Bethune Street New York, NY 10014

phone 212. 255.8240

www.merce.org

SCALE: 1/4" = 1' - 0"

DATE: Mar 27 10

DRAWN BY: HYC

REV.	DESCRIPTION	REVISION DATE
1	REP	01.19.10

Notes:

Patch: Dimmer 1 - 12, 25-60 1.2 KW Dimmer 13 - 24, 61-84 2.4 KW (Broken dimmer: #71, #84)

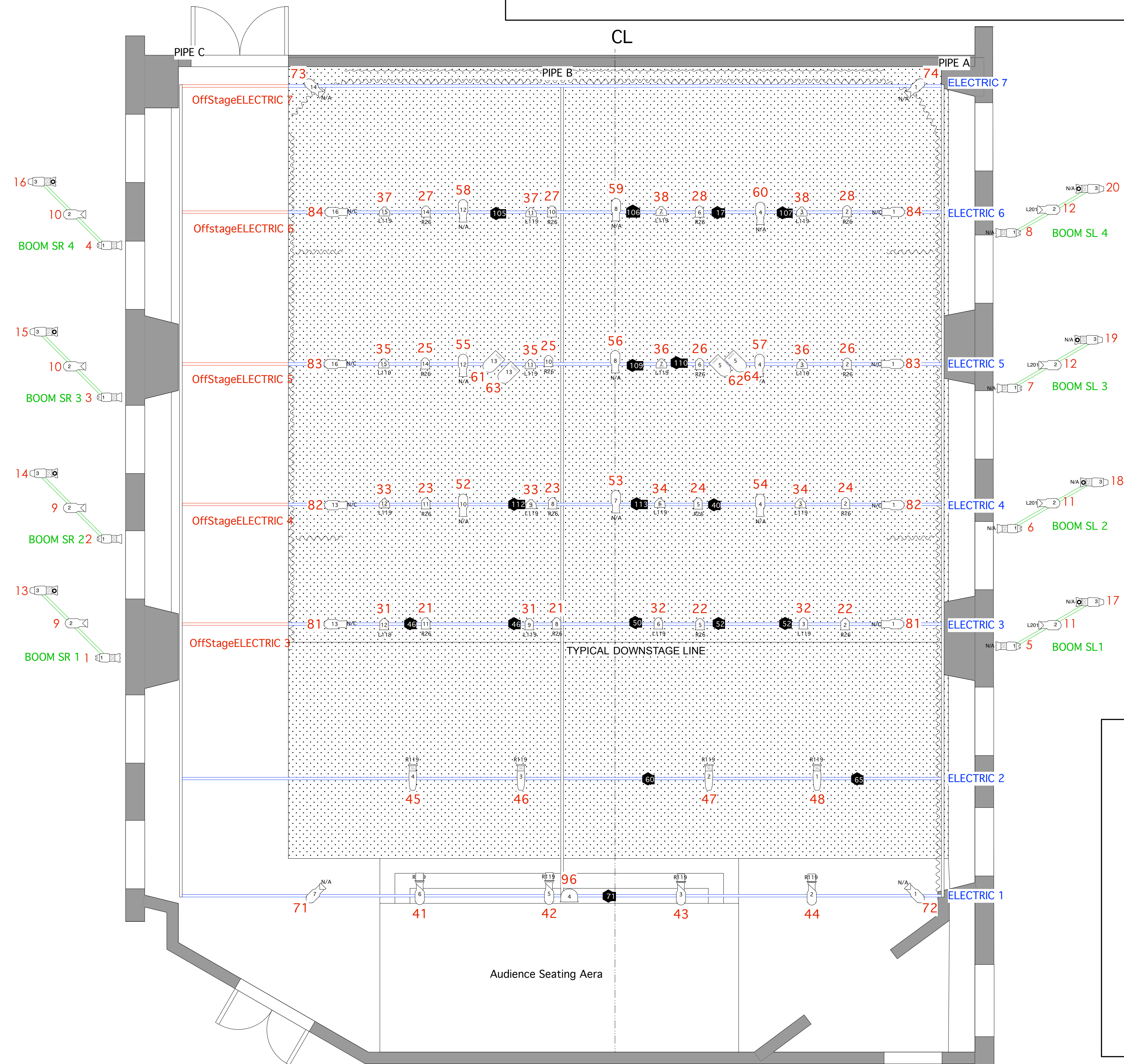
Lighting console is an ETC Express 24/48. Dimmers 57-60, 68, 69, 72 are not used. Available for use with spare instruments from inventory. Free available circuits are drawn in light plot.

Black traveller curtain covers stageleft side, backwall and stageright side to downstage line. Black traveller can be separated in two panels and runs in front of cyclorama for an easy change of set-up. Cyclorama measures 35' x 13' and is seamless.

No crossover possible behind curtain.

Note that pipe B is not dance floor CL, that height of pipe B is 16'6", whereas height of pipe A and C is 13'6". Audience sits on raised platform, stairs, extended seating area or in aisle. (check also floorplan)

There is an independent dimmer for houselight H1. If aisle is front, H2 will be houselight.



GOBO
UNIT#
CHANNEL

