

# MERCE CUNNINGHAM STUDIO

55 Bethune Street New York, NY 10014 phone 212. 255.8240 www.merce.org

Repertory Lighting Plot

Scale: 1/4 inch = 1 foot

Drawn by Alberto Edwin Bohl Studio Technical Director December 2006

## Notes:

Patch: Dimmer 1 - 60 1.2 KW Dimmer 61-78 2.4 KW

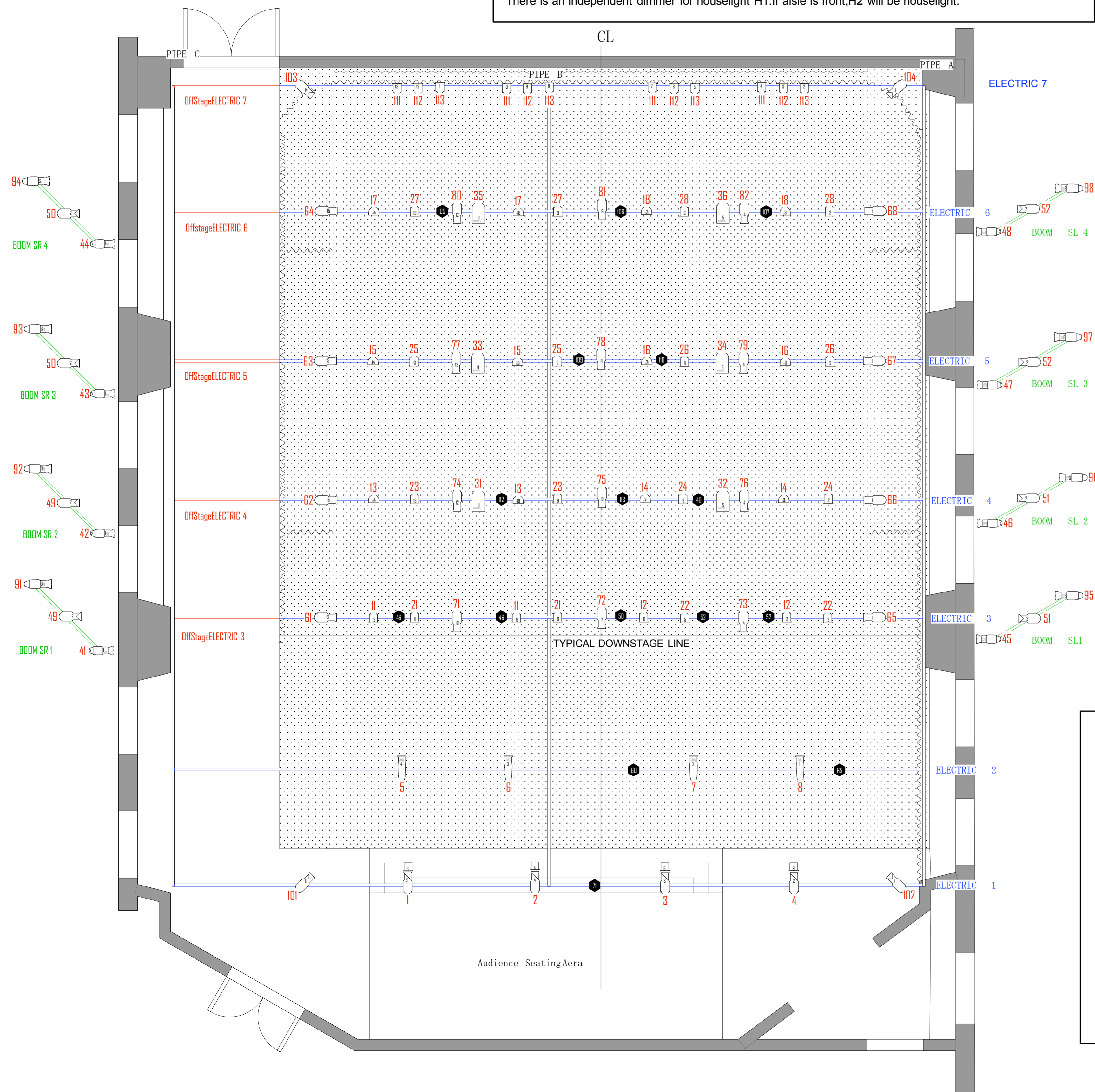
Lighting console is an ETC Express 24/48. Default patch is set 1 to 1. Dimmers 75-78 not used. Available for use with spare instruments from inventory. Free available circuits are drawn in light plot.

Black traveller curtain covers stageleft side, backwall and stageright side to downstage line. Black traveller can be separated in two panels and runs in front of cyclorama for an easy change of set-up. Cyclorama measures 35' x 13' and is seamless.

No crossover possible behind curtain.

Note that pipe B is not dance floor CL, that height of pipe B is 16'6", whereas height of pipe A and C is 13'6". Audience sits on raised platform, stairs, extended seating area or in aisle. (check also floorplan)

There is an independent dimmer for houselight H1. If aisle is front, H2 will be houselight.



Legend			
	Altman 360Q 4.5x6.5 (55i) 575 W		Strand SL 36i 575W
	Altman 360Q 6x9 (37i) 750 W		ETC Source4 50i 575W
	Altman 360Q 6x12 (26i) 750 W		ETC Source 4 Jr 50i 575W
	Altman 65Q 6" Fresnel 500 W		ETC Source 4 PAR WFL 750W
	Altman 65Q 8" Fresnel 1000 W		Altman PAR64 WFL 1000W
	Channel		
	Indicates location of available free circuits and circuit number. Handpatch to spare dimmers. Can be used with additional lighting instruments.		
	OffStageELECTRIC 4		ELECTRIC cannot be used, when black traveller curtain is pulled.

